

Note:

1. The agenda for Earmarking of additional 66 KV ESS in the Layout plan of Sectors G7, G8, G2, G6, G3 & G4 in Zone P-I was discussed in the 309th Screening Committee meeting held on 29.10.12 vide item no. 125/2012. The S.C. has approved and recommended the proposal for consideration of the Authority under sub-Clause: 8(2)/Permitted use premises in Use Zones of MPD-2021. (In File F3(01)/2009-MP)
2. The agenda was prepared on the basis of feasibility submitted by EE/ND-12 and EE/ND-9. (In File F3(01)/2009-MP)
3. The agenda was considered & approved in the Authority meeting held on 11.12.2012 vide item no. 88/12. (In File F3(01)/2009-MP)
4. Modification has been done on the LOP as available in the record.

(RINKOO KHAJAN)
PLG. ASST.

ASST. DIR. (PLG.)

DIR. (PLG.) in-charge

DELHI DEVELOPMENT AUTHORITY
H.U.P.W. CO-ORDINATION UNIT
Approved in... 20.12.12
Meeting held on... 29.10.12
Item No. 125/2012
Director (NP)

DELHI DEVELOPMENT AUTHORITY
H.U.P.W. CO-ORDINATION UNIT
VERIFIED
This proposal was considered in the
Meeting held on... 29.10.12
vide item no. 125/2012
Director (Arch.) Coord

DELHI DEVELOPMENT AUTHORITY
H.U.P.W. CO-ORDINATION UNIT
VERIFIED
This proposal was considered in the
Meeting held on... 20.12.12
vide item no. 88/12
Director (Arch.) Coord

LEGEND

- SECTOR BOUNDARY
- ACQUIRED LAND BOUNDARY
- RESIDENTIAL
- PUBLIC/ SEMI PUBLIC
- COMMERCIAL
- RECREATIONAL

DELHI DEVELOPMENT AUTHORITY

H.U.P.W. - COORDINATION
VERIFIED
THE PROPOSAL WAS CONSIDERED IN THE 253RD SCREENING
COMMITTEE MEETING HELD ON 08.02.07 VIDE
ITEM NO. 27/2007
-Sd-
DY. DIRECTOR (ARCH) COORD.

DELHI DEVELOPMENT AUTHORITY

H.U.P.W. - COORDINATION
VERIFIED
APPROVED IN THE 253RD SCREENING
COMMITTEE MEETING HELD ON 08.02.07 VIDE
ITEM NO. 27/2007
-Sd-
DIRECTOR (NP)

DELHI DEVELOPMENT AUTHORITY

H.U.P.W. - COORDINATION
VERIFIED
THE PROPOSAL WAS CONSIDERED IN THE 264th SCREENING
COMMITTEE MEETING HELD ON 02/05/2008 VIDE
ITEM NO. 58/2008
-Sd-
DY. DIRECTOR (ARCH) COORD.

DELHI DEVELOPMENT AUTHORITY

H.U.P.W. - COORDINATION
VERIFIED
APPROVED IN THE 264th SCREENING
COMMITTEE MEETING HELD ON 02/05/2008 VIDE
ITEM NO. 58/2008
-Sd-
DIRECTOR (NP)

DELHI DEVELOPMENT AUTHORITY

LANDUSE DISTRIBUTION (ZONAL LEVEL)

(AS PER ZDP)	(IN HA)	(%AGE)
1. GROSS RESIDENTIAL	228.82*	76.53
2. COMMERCIAL	NIL	NIL
3. MANUFACTURING	NIL	NIL
4. PUB & SEMI PUB	2.18	0.73
5. RECREATIONAL	36.54	12.22
6. UTILITY	7.66	2.56
7. TRANSPORTATION	23.80	7.96
TOTAL AREA	299.00	100

PROPOSED POPULATION @500 PPH = 114410 PERSONS
TOTAL DWELLING UNIT @5 PERSONS/ DWELLING = 22882

* The area of 57.28 Ha is under the existing Slum & JJ pockets, which is also a part of Gross Residential Area.

DISTRIBUTION OF GROSS RESIDENTIAL AREA

	As in 253rd Screening Committee (IN HA)	(%AGE)	As per modifications (IN HA)	(%AGE)
1. NET RESIDENTIAL	100.10	43.75	122.54	53.55
2. COMMERCIAL	9.40	4.10	6.77	2.96
3. PUBLIC/ S. PUBLIC	32.72	14.30	31.46	13.75
4. RECREATIONAL	55.53	24.27	31.93	13.95
5. CIRCULATION	31.07	13.58	36.12**	15.79
TOTAL AREA	228.82	100	228.82	100

** The 12m wide or above roads of existing three pockets of slum and JJ settlements has been included in the circulation area.

DISTRIBUTION OF FACILITIES (AS PER M.P.D. 2021)

	NO.
1. PRIMARY /MIDDLE SCHOOL	17
2. SR. SECONDARY SCHOOL	8
3. MILK BOOTH	17
4. RELIGIOUS BUILDING	16
5. MULTIPURPOSE/COMMUNITY HALL	8
6. DHALAO	AS/REQ
7. TAXI STAND	AS/REQ
8. ESS 11 KV	AS/REQ
9. POLICE POST	1
10. L.P.G. GODOWNS	3
11. FAMILY WELFARE CENTRE	2
12. MATERNITY HOME	2
13. NURSING HOME	2
14. DISPENSARY	1

DISTRIBUTION OF COMMERCIAL AREA

1. C.S.C. (9 shown in drawing & 9 are part of L.S.C.)	18
2. L.S.C.	9

Note:

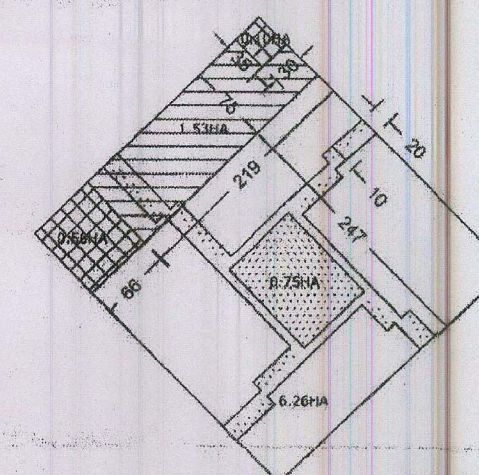
BANQUET HALL, SERVICE MKT, INFORMAL BAZAAR, HOSPITAL CATEGORY C&D, COMMUNITY RECREATIONAL CLUB, SOCIO CULTURAL ACTIVITIES WILL BE PROVIDED AS PER REQUIREMENT IN FACILITY AREA.

THE FACILITIES PROVIDED IN THE EXISTING J.J. SLUM SCHEMES IN SEC G-8 HAS NOT BEEN INCLUDED

PLACED IN THE 252nd SCREENING COMMITTEE MEETING HELD ON 7.12.06 VIDE ITEM NO. 152/2006.

MINOR ADJUSTMENTS IN THE SCHEME APPROVED BY COMMISSIONER (PLG) VIDE F-12 (269)2006/NP/PT II DATED 30.04.07 (PG. N/16)

EXISTING DRAIN/NALLAH WILL BE DEVELOPED AS LANDSCAPE CORRIDOR LIKE THAT OF DILLI HAAT.



SECTOR MODULE

APPROVED IN THE 253rd SCREENING COMMITTEE MEETING HELD ON 08.02.07 VIDE ITEM NO. 27/2007.

APPROVED H.T. LINE CORRIDOR 264TH SCREENING MEETING

TITLE: PROPOSED MODIFIED COMPOSITE STRUCTURE PLAN OF SECTOR G-7 & G-8, NARELA SUBCITY

SCALE:	DATE:	DEALT BY:	DRAWING NO.:
0 100m 200m	10/04/2007		462-R

PLG. ASST.:	ASST. DIR.:	JT. DIR. (PLG.)	NORTH:
-------------	-------------	-----------------	--------

(Sd/-) (RUL. CHAIRMAN) DIRECTOR (PLG.)	(Sd/-) (ASHOK KUMAR) ADDL. COMM. (PLG.)	(Sd/-) (A.K. JAIN) COMM. (PLG.)	
--	---	---------------------------------------	--

NARELA PROJECT

DDA PLANNING UNIT

D.S.I.D.C.

DSIDC LAND

ESS

PROPOSED 66 K.V. E.S.S. SITE
has been Allocated/Hand over
Concerned Civil Division i.e.
Executive Engineer /ND-12 DDA
on dated 26.06.2016 to power dept.
POWER HOUSE

S.L.F SITE